

B1 NEWS *flash*

Newsflash of the Thompson B1 Locomotive Trust

www.thompsonb1.org

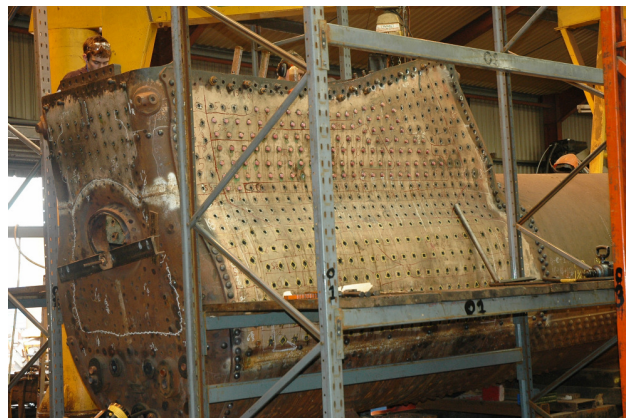
June 2011

Boiler work gathers pace at LNWR Crewe



We are delighted to report that the restoration of our boiler at LNWR Crewe is now proceeding at a greater pace than it had hitherto appeared and we are actually slightly *ahead* of schedule. As you will have seen from the pictures in previous newsletters, and in the ones below, it really has been a considerable repair job. In fact, we were surprised to hear from Richard Watkins that this repair has been the most comprehensive ever undertaken by LNWR of any boiler. But what is more gratifying for us to remember is that it will come in at a considerably lower price than that of other recent boiler overhauls on more 'glamorous' locomotives. And it is certainly cheaper than a completely new one. LNWR Crewe show again that even near-wrecks of a boiler can still be restored cost-effectively.

Of course, none of the work carried out to date would have been possible without the generosity of our members – from donations, sponsorship and loans. Remember, unlike other locomotive groups, we have received NO lottery funding for this overhaul. But once again, we must emphasise that we still need your money to finish the job. So please do contact our Treasurer Stephen Harris (stephencharis@hotmail.com, or 01494 813551, or 3 The Larchlands, Hazelmere Road, Penn, Bucks, HP10 8AB) if you would like to offer further financial assistance. No matter how big or small, all is appreciated. One request with respect to donations; any Gift Aid donations received before 30 June can be reclaimed in July or August. Gift Aided donations received from 1st July will not be reclaimed until 2012, so there is more incentive to get those donations in now.....! Let us hope now that the momentum is conserved and that we may have a working locomotive again within the next nine months.



Work to install the copper stays continues. Here you can see the ends of the stays protruding from the firebox sides. These will eventually be 'hammered over' to retain them.



The new smokebox awaits the fitment of the door ring (left). The new smokebox door is complete (right).



The new ashpan was fabricated by Hill & Webster in Ashbourne and was delivered earlier this year to Crewe.